

READ ME FIRST

Caution!

Entering, modifying or deleting data in an incorrect manner may cause the database to malfunction resulting in corrupt or lost data. To protect your data, review the online manual before using this application. Manuals are located at <http://darkstonedata.com/b4r-viewman.html>

SYSTEM REQUIREMENTS

This database is designed for use with Filemaker 12 or as a standalone version. Filemaker is not required using the standalone version. This database was tested on Windows 7 32 bit and 64 bit operating systems.

INSTALLING THE DATABASE

The following instructions assume that you are familiar with the operation of a computer and the Microsoft Windows operating system. While there is no advanced technical skill required, you will need to know how to perform basic computer tasks such as downloading files from the Internet and how to work with files and file folders within the Microsoft Windows environment.

The *Built4 Woodworking* data management system is distributed in zip format. If you have already downloaded your copy of the file, you should have a zip file that looks similar to the one in the example. You will need a zip/unzip program to open the files required.

In summary: to install the *Built4 Woodworking* application files:

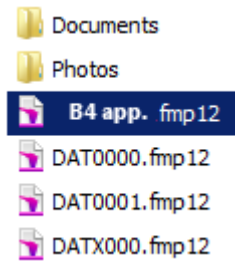
1. Go to the file folder on your computer that contains the *Built4Woodworking* zip file.
2. Use a file compression utility program capable of extracting a zip file to extract the application files into a file folder of your choice (e.g., Windows Documents folder).

The extraction should have created a single file folder in the root folder named “Built4Woodworking”, which contains the *Built4Woodworking* files and sub folders.

It is not recommended that you place Built4 Woodworking in the C:\program files folder, as it may compromise the security of your system. We suggest storing Built4 Woodworking in your My Documents folder, but you can store the files anywhere on your computer, including partitions and different drives, and the application will work.

FILEMAKER VERSION

Inside the file folder you will find four files. It is important that you do not alter the names of any of the files. The B4Woodworking.fmp12 is the main file. The three remaining files hold your data securely.



A suggestion to organize your Woodworking information is to create 2 folders. Documents and Photos. A method to store all your Woodworking photos and documents in a way that Built4 Woodworking may organize your files as it does not STORE the information but references the locations of the photos and/or documents. This keeps Built4 Woodworking lightweight and fast.

STAND ALONE VERSION

Inside the file folder you will find many files and folders. It is important that you do not alter the names of any of the files. The Built4Woodworking.exe is the main file.

A suggestion to organize your Woodworking information is to create 2 folders. Documents and Photos. A method to store all your Woodworking photos and documents in a way that Built4 Woodworking may organize your files as it does not STORE the information but references the locations of the photos and/or documents. This keeps Built4 Woodworking lightweight and fast.

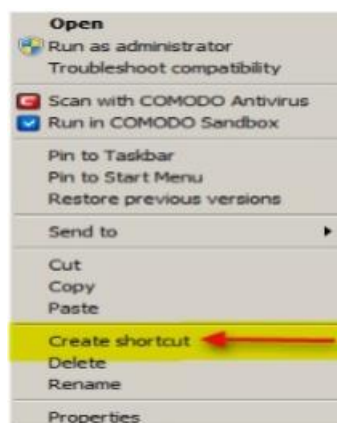


Tip: DarkStone Data recommends that you save a clean (before you enter any data) backup copy of the application in a separate directory.

Warning: Changing the default names of the files or file folders for the *Built4 Woodworking* data management system may cause the application to malfunction.

SHORTCUTS

The main application file for *Built4 Woodworking* is the file named B4Woodworking. If you wish to create a shortcut directly to the application, right click on the file name, select “Create Shortcut” and drag the shortcut icon onto your desktop or to another location of your choice.

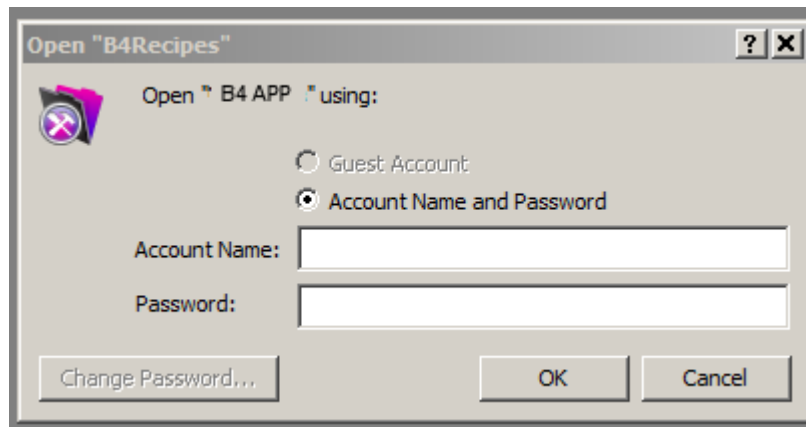


Note: In order for the database module to properly function, all files and folders must remain unchanged within the folder where you installed the application. If you wish to move the location of these files and folders, you must move the entire B4 Woodworking folder. You will need to change the path for all shortcuts to the new location in order for the shortcut to work.

UNINSTALLING

You can uninstall the application simply by deleting the main B4 Woodworking file folder, along with any back up folders and shortcuts from your computer.

STARTING THE DATABASE FOR THE FIRST TIME



Click on the main file in order to open the application. When the prompt appears, type the word **'Nails'** in as the Account Name. There is no password to enter. This will remain as your account name until you change it. NOTE: This graphic is only for example.



The user agreement is then displayed. You must agree in order to use this application. If you do not agree, the program will shut down. When finished, click on the close button.

Next you must activate the application. Enter your name, email (optional) and the serial number (you will find the serial number at the bottom of this page). If the serial number is not entered correctly, the program will not activate.

If you wish to register the application, follow the instructions on the pop up screen.

USER AND PASSWORD CHANGE.

To change the user name and/or password is simple. Click FILE on the upper toolbar. Click on CHANGE PASSWORD. Enter the new user name. If you do not want to use a password, leave the password blank. If you want to use a password, enter your password twice and click OK.

The online manuals will guide you further in the use of Built4 Woodworking. If you still have questions, contact us. Contact information is available on our website.

Thank you for purchasing our product.

BUILT4 WOODWORKING

account name: Nails

