
EditLive! for XML Install Guide

Version 3.5

Ephox Corporation

Copyright © 2001-2004 Ephox Corporation. All rights reserved.

All rights reserved. This document forms part of Ephox products and is licensed under the same terms as the software. The authors have made every effort in the preparation of this book to ensure the accuracy of the information. However, the information contained in this book is sold without warranty, either express or implied. Ephox Corporation, nor its dealers or distributors will be held liable for any damages caused or alleged to be caused either directly or indirectly by this book.

System Requirements

This section outlines the system requirements needed to run Ephox EditLive! for XML.

Client Requirements

Microsoft Windows XP, 2000, NT 4.0, 98 or Me:

- Java 2 Platform, Standard Edition version 1.4 (installed automatically if required)
- Celeron 700-MHz or faster with at least 256MB of RAM
- Microsoft Internet Explorer 5.01 or later, Netscape Navigator 6.2 or greater, or Opera 7.0 or later.

Apple Macintosh OS X:

- Mac OS X 10.1.1 Update (includes MAC OS X Java 2 Runtime Environment)
- Safari version 1.0 or greater, or Microsoft Internet Explorer 5.13* or greater (included in MAC OS X updates).



Note

*The Visual Designer requires Java 1.4 and therefore does not support Microsoft Internet Explorer on Mac OS X. (Internet Explorer is

supported on the Microsoft Windows). Apple's Safari browser is supported on Mac OS X.

Solaris 8 OE:

- Java 2 Platform, Standard Edition version 1.4 (installed automatically if required)
- Netscape Navigator 6.2 or greater

Linux:

- Java Runtime Environment version 1.4.2
- Celeron 700-MHz or faster with at least 256MB of RAM
- Netscape Navigator 7.2

EditLive! Microsoft Word Import Feature:

- Microsoft Windows XP, 2000, NT 4.0, 98 or Me
- Microsoft Office 2000 or greater installed on the client machine

Supported Application Servers

The EditLive! for XML JavaScript Edition will function on any Web server that HTML content can be served from.

General Server Install Instructions

The EditLive! for XML SDK is packaged with this documentation, example integrations, image upload scripts and the EditLive! for XML application files allowing EditLive! for XML to be run and redistributed for other applications. The example integrations for EditLive! for XML are packaged within a folder which must be deployed on a Web server to allow the integrations to be viewed.

The EditLive! for XML comes packaged as a .zip file or an installer package depending on the edition of the EditLive! for XML SDK to be used. To install the EditLive! for XML simply either unzip the package. Once the EditLive! for XML SDK

has been installed the Web components of the install can either be found within a folder named `webfolder` which is a subfolder of the root folder. Placing this folder on a Web server will allow these portions of the SDK to be accessed.

Deploying the EditLive! for XML Sample Integrations

The sample integrations for EditLive! for XML are packaged within the folder named `webfolder`. This folder should be placed in a Web accessible directory in order to access the EditLive! for XML sample integrations.

When placing the `webfolder` directory on a Web server it must be ensured that its child directories are also Web accessible.

Once the `webfolder` directory has been placed on a Web server the EditLive! for XML sample integrations can be accessed using a Web browser. The EditLive! for XML sample integrations are available by accessing the URL

`http://yourserver/webfolder/index.html` where *yourserver* represents the host name of the Web server EditLive! for XML has been installed on and *webfolder* is the name of the virtual directory mapping to the EditLive! for XML `webfolder` directory on the file system.

EditLive! for XML Evaluation License

EditLive! for XML is packaged with a license for the `localhost` host. This is an untimed license that allows EditLive! for XML to be accessed via the `localhost` domain. Developers can use this license while evaluating and developing with EditLive! for XML. When deploying EditLive! for XML within a Web application the license for the `localhost` domain should be replaced with a license for the relevant Web application host.

For more information on the terms of EditLive! for XML licenses please see the `license.txt` file packaged with EditLive! for XML. This file can be found at `SDK_INSTALL/license.txt` where *SDK_INSTALL* is the location that the EditLive! for XML SDK has been installed to.



Note

As EditLive! for XML is distributed with a license for the `localhost` domain it is recommended that, for evaluation and development purposes, EditLive! for XML is installed on a local Web server.

Redistributing EditLive! for XML

The files required to redistribute EditLive! for XML can be found in the `SDK_INSTALL/webfolder/redistributables` directory, where `SDK_INSTALL` represents the location that the EditLive! for XML SDK has been installed to. The `redistributables` directory contains all the files required to deploy EditLive! for XML to Web server for use within a Web application.

To deploy EditLive! for XML with another Web application copy the `redistributables` directory, along with its subdirectories, into the relevant Web application and ensure that the URL for the **DownloadDirectory** load-time property, the EditLive! for XML JavaScript library include and the `<spellCheck>` element `jar` attribute are correct for the Web application.



Note

The `redistributables` directory can be renamed, as can its subdirectories, without affecting the functionality of EditLive! for XML provided that the URLs for the relevant properties, as listed above, are changed in accordance with the changes made to the structure, location and name of the `redistributables` directory and its contents.

Redistributing the Java Runtime Environment from a Local Server

Developers can download and then deploy a copy of the Java Runtime Environment (JRE) from a local Web server. Redistributable JRE installers can be found on the [Sun Microsystems Java Web site](http://java.com/) [http://java.com/]. Once downloaded the JRE installer should be placed in the `redistributables/editlivexml` directory of the EditLive! for XML install or have their location specified via the **JREDownloadURL** property.

Packaged Image Upload Handler Scripts

Packaged with the EditLive! for XML SDK are a range of image upload handler scripts which can be used to receive images uploaded by EditLive! for XML via HTTP. The packaged image upload scripts can be found in the `SDK_INSTALL/webfolder/uploadscripts/` directory.

For more information on how to use EditLive! for XML's integrated image upload functionality and the packaged image upload scripts please see the documentation on [Using HTTP for Image Upload in EditLive! for XML](#).

See Also

- [Minimizing an EditLive! for XML Deployment](#)

- [Using HTTP for Image Upload in Ephox EditLive! for XML](#)
- [Licensing EditLive! for XML](#)

Ephox EditLive! for XML JavaScript Installation Guide

Introduction

This document outlines the steps needed to install the Web component of the Ephox EditLive! for XML development suite.



Note

It is recommended that you run the Ephox EditLive! for XML JavaScript SDK Install on a Web server on your local machine.

Installation Details

Other Install

Ephox EditLive! for XML SDK will be provided as a .zip file. The first step you need to undertake is to un-zip the downloaded file. In order to do this, simply use an un-archiving program such as [WinZip](http://www.winzip.com/) [http://www.winzip.com/], [Power Archiver](http://www.powerarchiver.com/) [http://www.powerarchiver.com/] or any other number of archiving utility tools available. You should un-archive the file to an appropriate location, such as C:\editlive\. Once you have unzipped the file, you need to set up Ephox EditLive! for XML to run on your Web server, as per the instructions below.

Web Server Deployment

To deploy the EditLive! for XML SDK on your Web server simply copy the *webfolder* directory, and all its subdirectories, from the location where they were un-archived to a location from which they can be served on your Web server.

What to do when you have Finished the Installation Process

If you have followed this installation guide correctly, you can now start using Ephox EditLive! for XML JavaScript Edition. Please direct your browser to the default.htm document in the root directory of your Ephox EditLive! for XML folder. For example, if you added a Web application called `editlive` to your local host Web server (on port 8080), to start viewing the documentation simply direct your Web browser to

`http://localhost:8080/editlive` . If you have deployed EditLive! for XML JavaScript Edition on an external Web server then see [Deploying to an External Web Server](#). Please work through the Ephox EditLive! for XML documentation and examples to familiarize yourselves with the product.

Ephox EditLive! for XML IIS Installation Guide

Introduction

This document outlines the steps needed to install the Web component of the Ephox EditLive! for XML development suite.

Installation Details

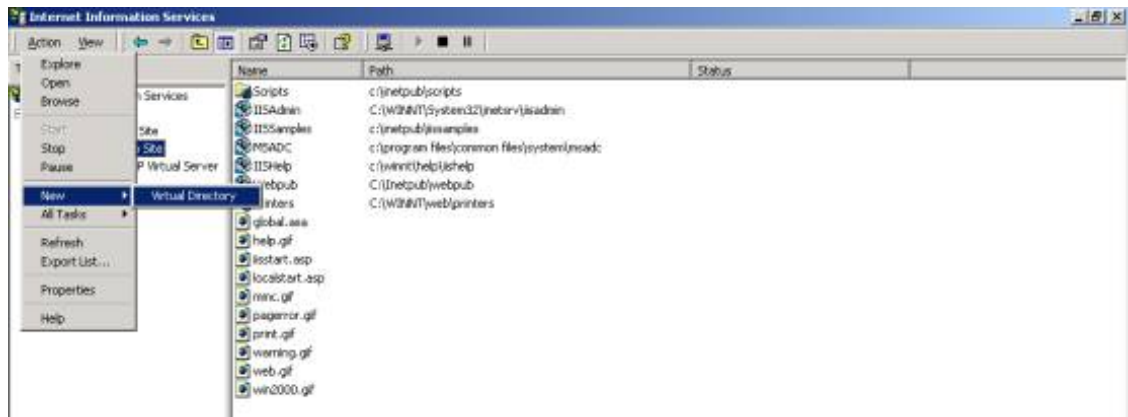
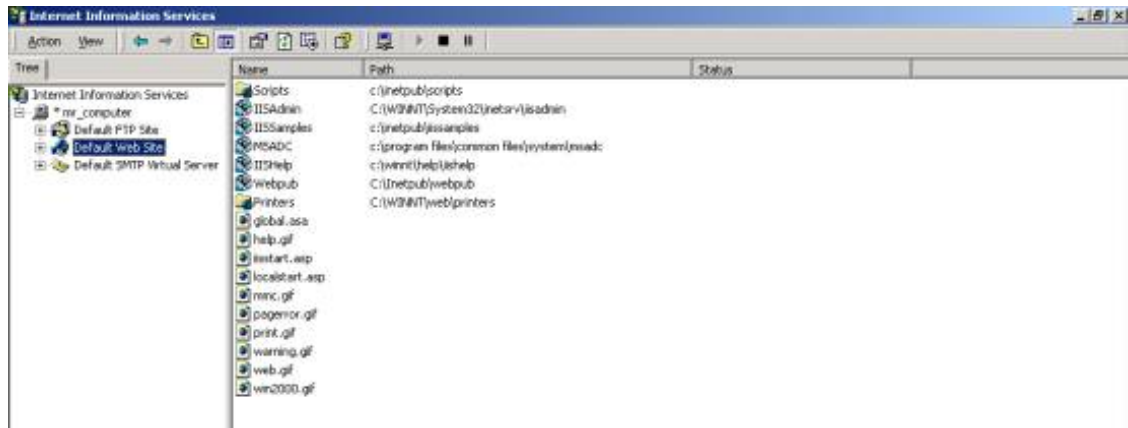
To install Ephox EditLive! for XML on a Windows 2000 machine, running IIS 5.0:

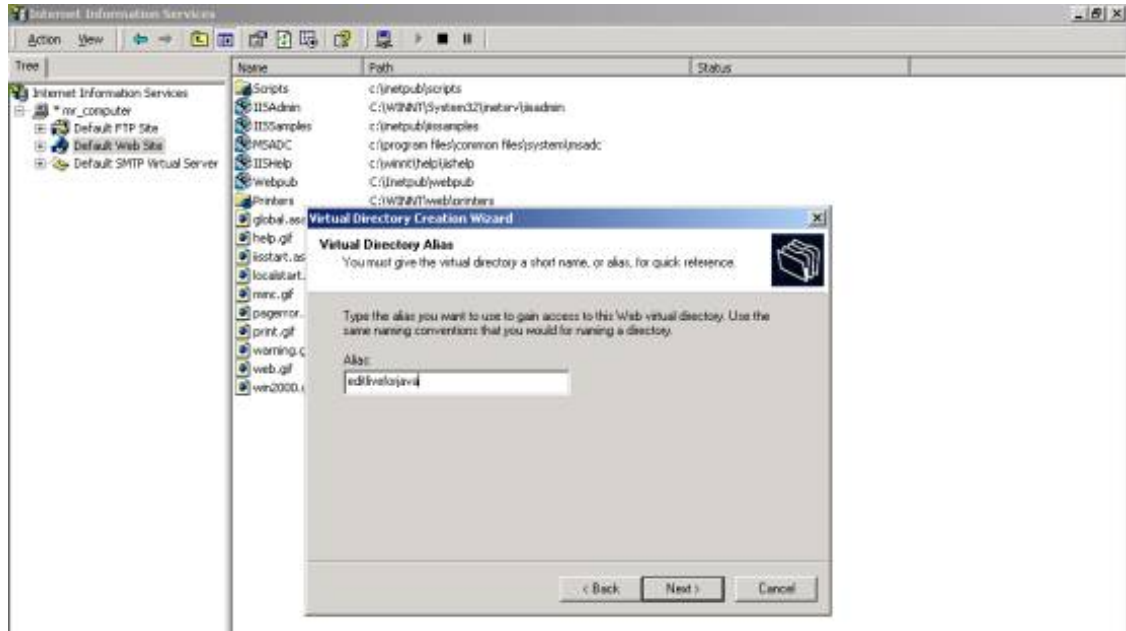
1. Extract the `.zip` file that was downloaded for EditLive! for XML
2. Read Ephox EditLive! for XML SDK Setup Information and then click **Next**.
3. Read EditLive! for XML SDK License Information and then click **I Agree** if you accept the terms of the license. **I Agree** must be clicked if you wish to continue with the installation.
4. Select the destination directory where you would like Ephox EditLive! for XML to be installed. To change the default directory, click **Browse**. Click **Next** when you are happy with the directory information.
5. If you are happy with the installation process thus far, click **Next** to start installing files.
6. Click **Finish** when all files have been installed.

The Ephox EditLive! for XML SDK has now been installed. The next step you need to perform in order to get Ephox EditLive! for XML working on your IIS server, is to map a virtual directory for Ephox EditLive! for XML on the server.

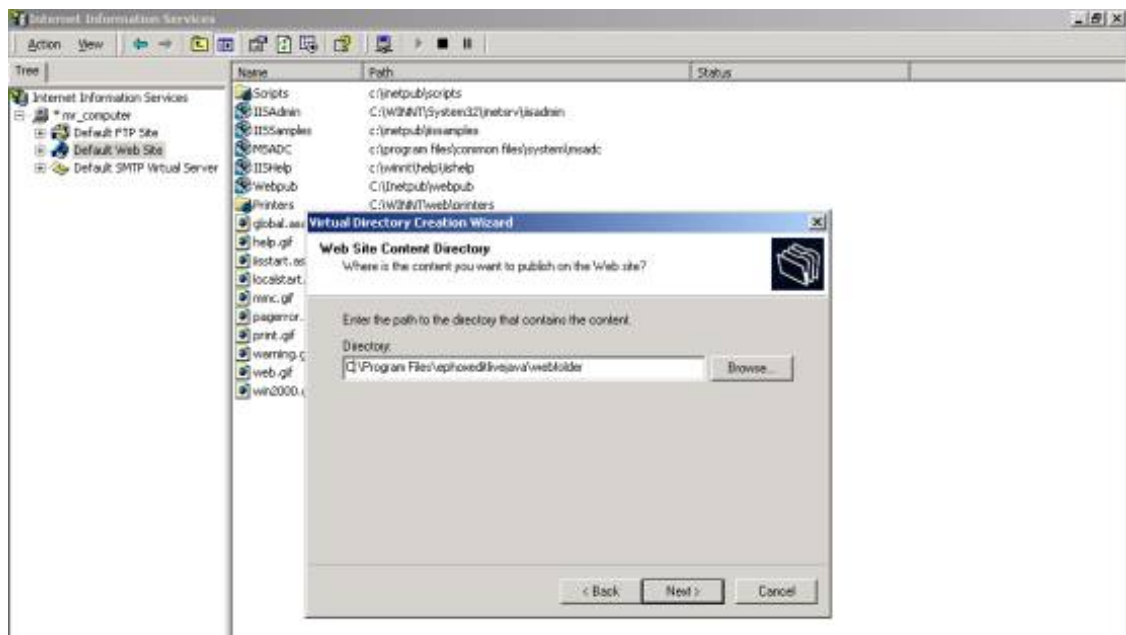
To map a virtual directory on your server you will need to follow the steps below:

1. On the **Start** menu, in **Settings** go to **Control Panel**. Now double-click on **Administrative Tools** and then **Internet Services Manager**.
2. Expand the tree next to your Computer Name.

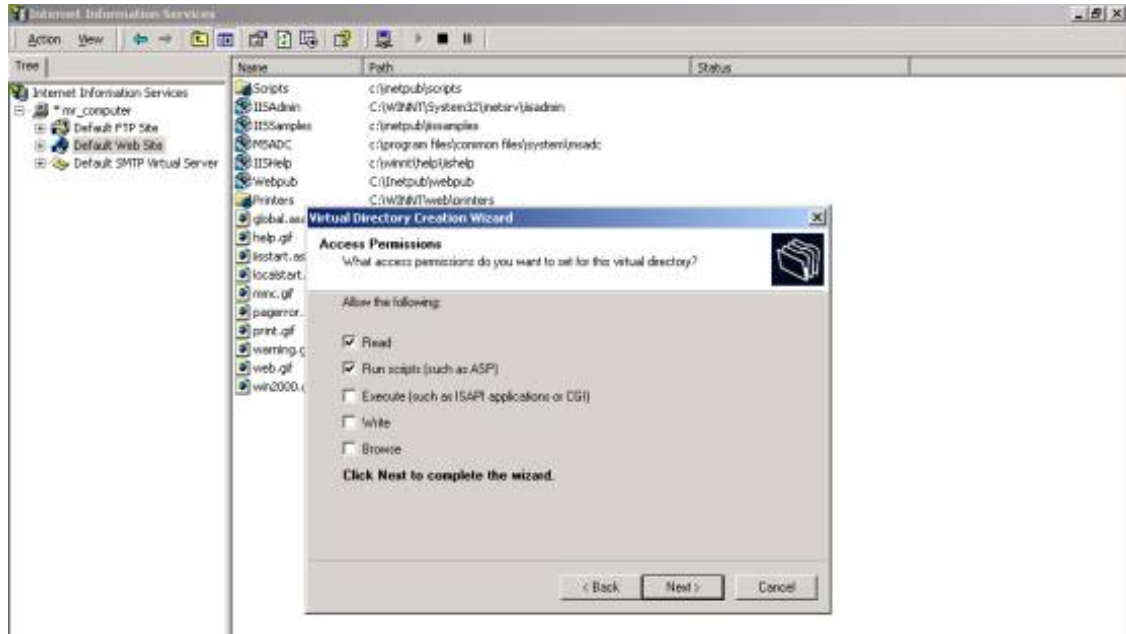




1. In the **Directory** field, on the **Virtual Site Content Directory** Dialog enter the correct location. e.g. "C:\Program Files\Ephox EditLive! for XML\SDK\webfolder" is the default location.



1. Leave the default selections on the **Access Permissions** dialog. The **Read** and **Run Scripts** check boxes should be selected.

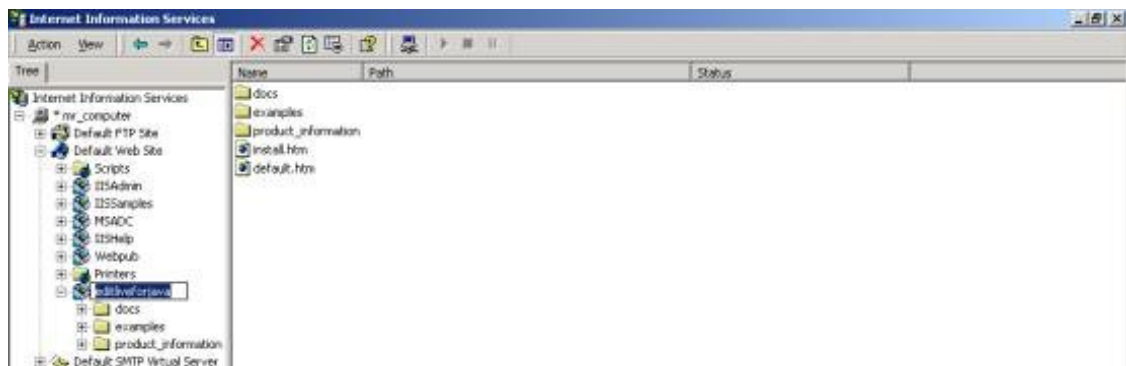


1. Click **Next** followed by **Finish** to exit the wizard.

You will now have an `editlive` folder in the **IIS snap-in**.

To check the installation process has been completed correctly:

1. Open a Web browser.
2. In the IIS snap-in, in the webfolder directory you just created, right-click on `default.htm`.
3. Select **Browse**.



You should see the Ephox EditLive! for XML Web component home page within the Web browser.

You have now successfully installed Ephox EditLive! for XML and customized your

system correctly.

Once You Have Successfully Installed Ephox EditLive! for XML

You can now start using Ephox EditLive! for XML.

If you are using a Web server on your machine to serve the EditLive! for XML SDK then:

To look at the examples, direct your browser to:

`http://localhost/editliveWebfolder` where *editliveWebfolder* is the name of the virtual directory in IIS.

For ease of future use, it is strongly recommended that you create a shortcut to the above link, and then add that shortcut to the **Ephox EditLive! for XML** menu.

Ephox EditLive! for XML Sample Java Server Installation with Apache Tomcat

Introduction

The aim of this article is to provide an installation guide on how to set-up Ephox EditLive! for XML on a [Tomcat](http://jakarta.apache.org/tomcat/) [http://jakarta.apache.org/tomcat/] web server. Tomcat has been chosen as it is a freely available and simple server, that clearly shows the major steps needed to get Ephox EditLive! for XML up and running on your server of choice.

Sample Tomcat Installation Guide

Firstly you must download Tomcat if you do not already have it. You can download it from the [Apache Jakarta Project](http://jakarta.apache.org/tomcat/) [http://jakarta.apache.org/tomcat/].

Once Tomcat is installed correctly follow the below steps:

1. Stop your Tomcat web server.
2. Copy the `webfolder` directory from your Ephox EditLive! for XML installation directory (i.e. where you un-archived the downloaded Ephox EditLive! for XML ZIP file).
3. Paste the `webfolder` directory in `TOMCAT_HOME/webapps` directory. Where `TOMCAT_HOME` represents the location of your Apache Tomcat install directory.

4. Rename the `webfolder` directory to something more meaningful, such as `editlivexml`.
- 5.
6. Ephox EditLive! for XML should now be ready to run on your server. Simply direct your browser to `http://yourserver.com:PORT/editlivexml` (where `yourserver.com` is the name of your Web server and `PORT` is the port on the Web server that Tomcat is running on). If your web server is running on your local machine, on port 8080 for example, you would direct your browser to `http://localhost:8080/editlivexml`.

If you have followed the above steps correctly, your Tomcat web server should be now running the Ephox EditLive! for XML SDK.

Deploying to an External Web Server

Introduction

This document outlines how to deploy the Ephox EditLive! for XML SDK to a Web server external to your local machine.



Note

- In order to deploy to an external Web server you must have write permissions for the directory on the Web server where you wish to deploy the EditLive! for XML SDK.
- Ensure that you have the correct SDK for your Web server architecture.

Deployment Details

To deploy the EditLive! for XML SDK to an external Web server:

1. Install EditLive! for XML SDK on your local machine.
2. Locate the directory where you installed Ephox EditLive! for XML.
 - For an IIS install the default location of the EditLive! for XML SDK is:
`C:\Program Files\Ephox EditLive! for XML\IIS SDK`

- A JavaScript install does not have a default location, you will find the required files in the directory to which you unzipped the SDK.
3. Copy the `webfolder` subdirectory to the location where you wish to deploy it to on the external Web server.
 4. To access the EditLive! for XML SDK on the external Web server direct your browser to:

`http://your_web_server/location_of_editlive_webfolder/`

- Where `your_web_server` is the name of the external Web server you have deployed to and,
- `location_of_editLive_webfolder` is the location to which the EditLive! for XML SDK `webfolder` directory was copied to in the above steps

The EditLive! for XML SDK should now be ready to use from the external Web server.

EditLive! for XML Client Install

The EditLive! for XML applet is automatically deployed to users through Java's applet deployment technology. This allows users to have EditLive! for XML seamlessly installed when first running a page containing EditLive! for XML. Users are not required to physically download and install EditLive! for XML themselves. This greatly simplifies the process for the end user.

What is Required to Use EditLive! for XML

EditLive! for XML requires that the Java Runtime Environment (JRE) version 1.4 or above is installed on the user's computer. If this is not detected then EditLive! for XML will automatically deploy and install a version of the JRE. Through the **LocalDeployment** property developers can specify where the JRE will be deployed from. This property allows developers to specify if the JRE should be deployed from the local server or downloaded over the Web from Sun Microsystems.

Installing the JRE from the Web Application Server

This is recommended when users can be expected to access EditLive! for XML via Web applications on an intranet. In this case it will be much faster to download the JRE from the local server than from Sun Microsystems' server. To deploy the JRE from the

relevant application server download an installer for the appropriate version of the JRE from Sun Microsystems and place it on your Web server. Then set the **LocalDeployment** property to `true` when instantiating EditLive! for XML and also set the **JREDownloadURL** property to map to the location that the JRE is available from on your Web server .

Installing the JRE from a Sun Microsystems Server

This is recommended when users can be expected to access EditLive! for XML from a machine external to the network on which EditLive! for XML is hosted (i.e accessing EditLive! for XML over the Internet). In this case download times for the JRE can be expected to be much slower than an install over an intranet. To deploy the JRE from a Sun Microsystems' server set the **LocalDeployment** property to `false` when instantiating EditLive! for XML.

Getting the Java Runtime Environment

Copies of Sun Microsystem's Java Runtime Environment can be found on the [Java Web site](http://java.com/) [http://java.com/]. Developers can download JRE installers from the Java Web site for hosting on their servers for the purposes of deploying the JRE.

Installing the EditLive! for XML Client

EditLive! for XML is automatically deployed to users via the Java Applet technology using signed JAR files. All the files necessary to achieve the deployment of EditLive! for XML are included in the EditLive! for XML SDK and can easily be hosted on a Web server.

When a page containing EditLive! for XML is first accessed by a user the client machine downloads the files necessary to run EditLive! for XML and permanently caches them on the client machine. When accessing the page in future the files necessary to run EditLive! for XML will be loaded from the cache.

If the distribution of EditLive! for XML is updated on the server any updated files are automatically deployed to the client upon their first access and cached.

Dealing with a `java.lang.ClassNotFoundException` Exception

If the Java plug-in cannot locate the `editlivexml.jar` then a `java.lang.ClassNotFoundException` exception will be generated by the plug-in. There are two probable causes for this:

- The path set via the **DownloadDirectory** property is incorrect. Ensure that the

DownloadDirectory property correctly provides a URL for the location of the directory containing the EditLive! for XML source, including the `editlivexml.jar` and `editlivexml.js` files.

- If it has been ensured that the path is valid for the deployment and the exception is still occurring the `editlivexml.jar` may be corrupted. Try downloading the EditLive! for XML SDK again from the Ephox Web site.