



Quick Start Guide

Relevos 6.0 looks different from previous versions, so we created this guide to help you minimize the learning curve and configure the basic functions of the software.

Add a Group

From the GROUPS tab, choose Create a Group. Or, right-click on the tree-view and choose Add a Group

Add a Computer

From the COMPUTERS tab, choose Add Computers, or right-click on the tree-view.

Get the Status

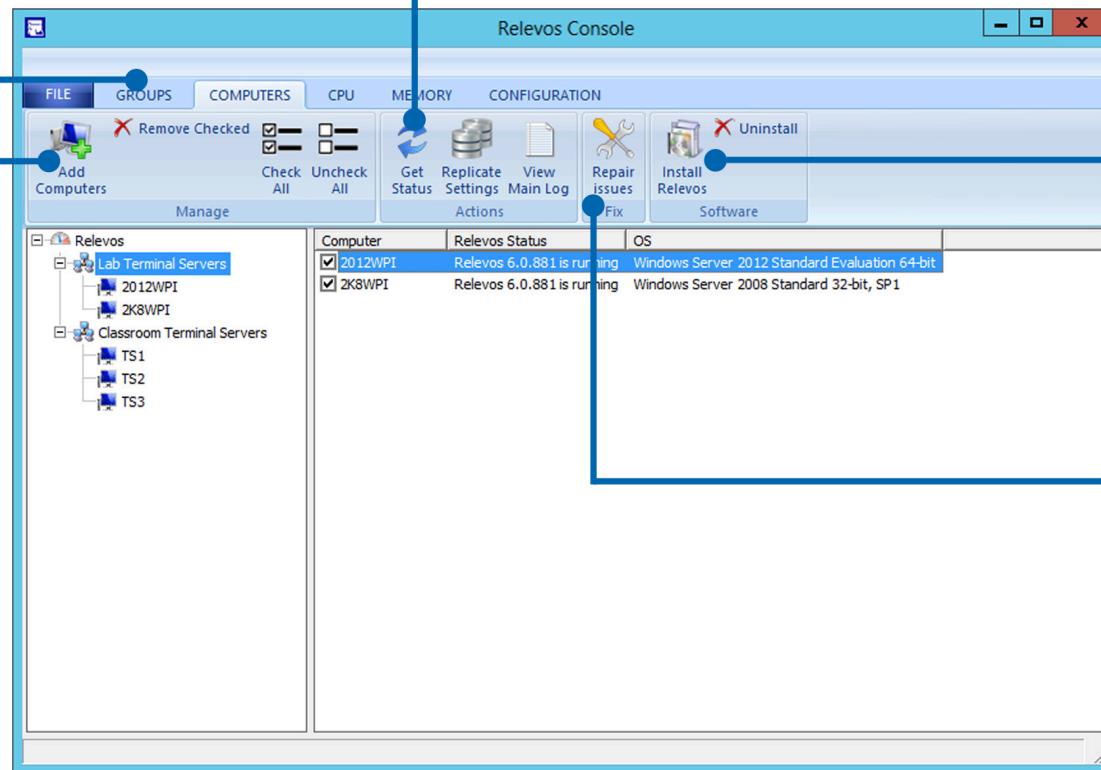
To check if the computers are ready to run Relevos, press this button. A status will show, with any errors if applicable.

Install Remotely

Check the target servers and choose this option to install the Relevos Client to them.

Repair Issues

If any computers have an issue, Relevos will attempt to fix them. Some issues cannot be fixed by the Relevos Console (i.e. a firewall)





Configure CPU Throttling

CPU Throttling is one of the main features of Relevos. It enables more capacity on the server and eliminates excessive process CPU utilization with no user slowdowns.

First, click the CPU tab

The CPU tab contains all of the functions related to controlling CPU utilization. After clicking on the CPU tab, click on the Throttling icon.

Next, select/check servers

Put checkmarks in front of servers that will receive the settings below. Highlight a server if you want to use its settings as a starting point.

Then, turn on Throttling

Turn on the Throttling setting, and adjust the maximum CPU% for each user process. A good starting point is 33%.

Finally, save settings

Click here to save the settings to only the checked servers. This same process is used throughout Relevos for sending settings for the chosen option. For full Replication, choose it from the Computers tab.

The screenshot shows the Relevos Console interface. The 'CPU' tab is selected in the top navigation bar. On the left, under 'Domain Computers', the servers '2012WPI' and '2K8WPI' are listed. '2012WPI' is selected. In the main area, the 'Throttling' icon is highlighted. Below it, the 'Throttling' section is expanded, showing 'On' selected for the radio buttons. The 'Maximum CPU % for each user process' is set to 25. The 'Record throttled processes' checkbox is checked. The 'Advanced...' button is also visible.

Computer	Relevos Status	OS
<input type="checkbox"/> 2012WPI	Relevos 6.0.881 is running	Windows Server 2012 Standard Evaluation 64-bit
<input checked="" type="checkbox"/> 2K8WPI	Relevos 6.0.881 is running	Windows Server 2008 Standard 32-bit, SP1

☒ Save these settings to the checked computers Data successfully retrieved from server: 2012WPI

Throttling ?

☒ On ☐ Off

Maximum CPU % for each user process: 25

☒ Record throttled processes (View...)

Select individual processes and users Advanced...

[Defaults](#)

Advanced

You can choose specific processes or users here.



Configure Memory Optimizing

Memory Optimizing enables more programs to run within the memory limits of the server. Allocated-but-unused memory is freed but still made available to the program consuming the excessive memory.

First, click the Memory tab

The Memory tab contains all of the functions related to controlling process memory. After clicking on it, click on the Memory Optimize icon.

Next, select/check servers

Put checkmarks in front of servers that will receive the settings below. Highlight a server if you want to use its settings as a starting point.

Then, turn on Memory Optimize

Turn on the Memory setting, and adjust the minimum memory limit used for each user process.

Finally, save settings

Click here to save the settings to only the checked servers. This same process is used throughout Relevos for sending settings for the chosen option. For full Replication, choose it from the Computers tab.

The screenshot shows the Relevos Console interface with the Memory tab selected. The left sidebar shows a tree view with 'Relevos' and 'Domain Computers' expanded, listing '2012WPI' and '2K8WPI'. The main area displays a table of computers and their Relevos status. Below the table, there are options to 'Save these settings to the checked computers' and a 'Memory Optimize' section with radio buttons for 'On' and 'Off'. The 'On' option is selected, and a text field shows '250 MB'. There are also checkboxes for 'If any process exceeds the above limit, save even more memory by paging out its non-essential memory' and 'Record memory-optimized processes (View...)'. At the bottom, there is a 'Select individual processes' button and an 'Advanced...' link.

Computer	Relevos Status	OS
<input type="checkbox"/> 2012WPI	Relevos 6.0.881 is running	Windows Server 2012 Standard Evaluation 64-bit
<input checked="" type="checkbox"/> 2K8WPI	Relevos 6.0.881 is running	Windows Server 2008 Standard 32-bit, SP1

[Save these settings to the checked computers](#) Data successfully retrieved from server: **2012WPI**

Memory Optimize ?

☒ On ☐ Off

Free allocated but unused memory in each user process if it goes above: MB

☐ If any process exceeds the above limit, save even more memory by paging out its non-essential memory

☐ Record memory-optimized processes ([View...](#))

Select individual processes [Advanced...](#) [Defaults](#)

Advanced

You can choose specific processes or users here.



Configure Memory Tracking

Memory Tracking gives administrators a dynamic notification and resolution to user processes that consume excessive memory.

First, click the Memory tab

The Memory tab contains all of the functions related to controlling process memory. After clicking on it, click on the Track icon.

Next, select/check servers

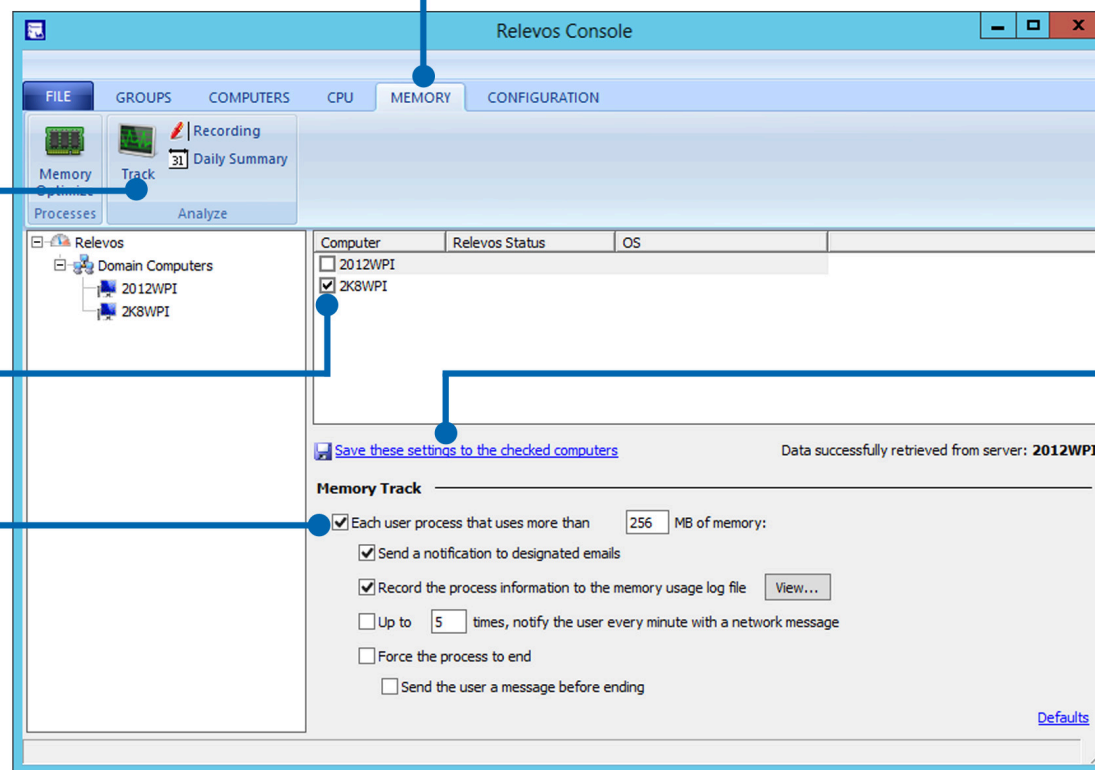
Put checkmarks in front of servers that will receive the settings below. Highlight a server if you want to use its settings as a starting point.

Then, turn on Memory Track

Check the main checkbox to turn on Memory Tracking. A good starting value is 256MB.

Finally, save settings

Click here to save the settings to only the checked servers. This same process is used throughout Relevos for sending settings for the chosen option. For full Replication, choose it from the Computers tab.





Configure Email Notifications

Relevos can send notifications to designated emails for the events it tracks.

First, click the Configuration tab

The Configuration tab contains settings that aren't CPU or Memory-related. For this Quick Start setup, click on the Email icon.

Next, select/check servers

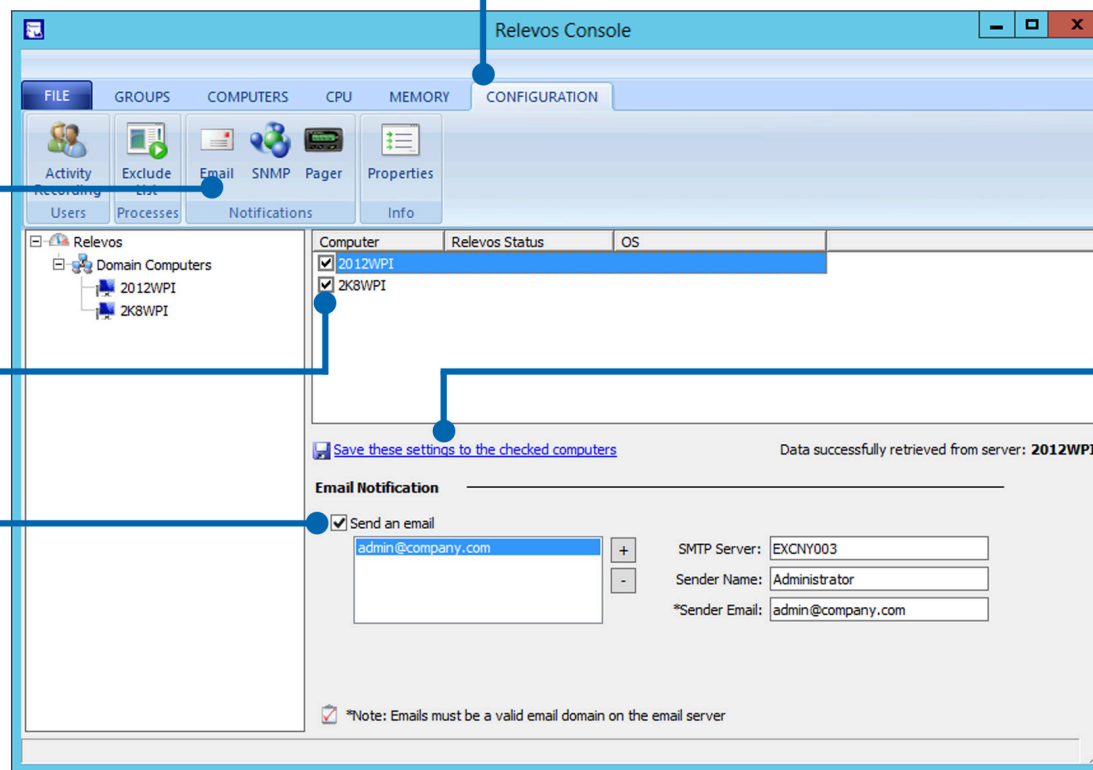
Put checkmarks in front of servers that will receive the settings below. Highlight a server if you want to use its settings as a starting point.

Then, turn on Email Notification

Check the main checkbox to turn on Email Notification, then fill in the fields as appropriate.

Finally, save settings

Click here to save the settings to only the checked servers. This same process is used throughout Relevos for sending settings for the chosen option. For full Replication, choose it from the Computers tab.





About

"Great software makes the complex appear simple"

Relevos prevents any user or process from slowing down or bringing a server down.

Relevos throttles CPU and Memory of processes on terminal servers. It works within VMs, on bare metal servers, and with Citrix, ProPalms, and standard terminal server/Remote Desktop Services. It increases user capacity, increases performance, and eliminates user delays by ensuring no user or process can use the CPU at the expense of others. It does this using patented software technology.

Trust what companies worldwide already know: when you need to control the CPU and Memory user processes consume with professional software reliably and affordably, choose Relevos.

Requirements

Relevos requires Remote Desktop Services / Terminal Services.
Relevos runs on Windows Server 2003, 2008, 2008 R2, and 2012.

Relevos uses 35MB RAM and 20MB of disk space.

Helpful links

Product Information

<http://www.wmsoftware.com/relevos>

Support

<http://www.wmsoftware.com/support>
support@wmsoftware.com
+1 330.558.0501

How to buy

Purchase Direct:

<http://www.wmsoftware.com/relevos/buynow>
sales@wmsoftware.com
+1 330.558.0501

Purchase through a WM Software Reseller

<http://www.wmsoftware.com/reseller>