

## Appendix J: Installing the Audio Drivers for the Windows® 2000 Server / Workstation

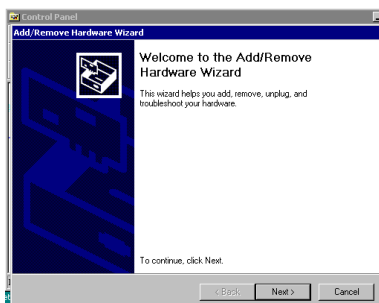
In this section we will show you how to install the Audio Drivers to your Windows® 2000 Server/Workstation operating system. All screen shot are from Windows® 2000 server version.

### Note J-1

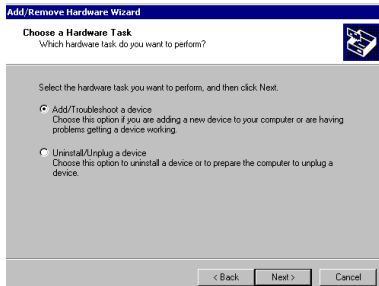
Details of the Windows® 2000 Server/Workstation operating system are not mentioned in this manual. If you have any problems with the settings, operating or installing Windows® 2000 Server/Workstation, please refer to your Windows® 2000 Server/Workstation user's manual or other resources provided by Microsoft® Corporation.



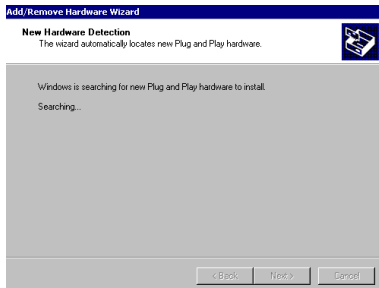
First enter into “**Control Panel**” and then “**Add/Rename Hardware**”.



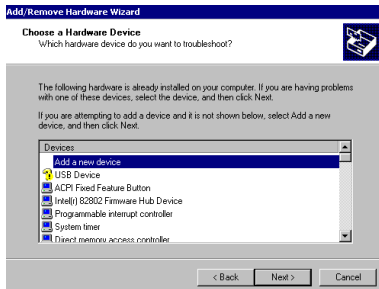
The Add/Rename Hardware Wizard will begin. Press “**Next**” to go on.



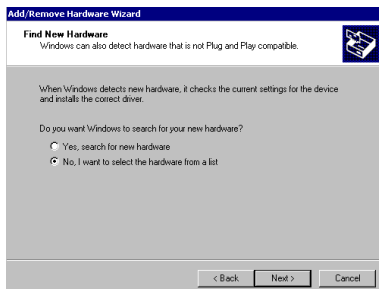
You will be asked to choose a hardware device. Choose **“Add/Troubleshoot a device”** and then **“Next”** to go on.



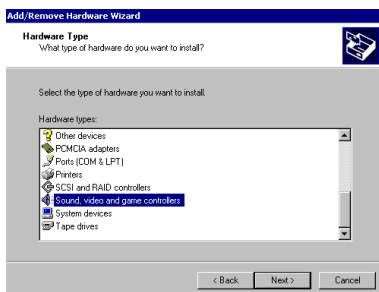
Windows will search for new hardware.



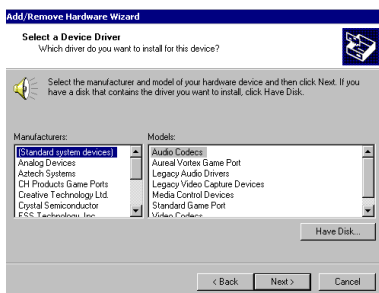
Choose **“Add a new Device”**. Then press **“Next”** to go on.



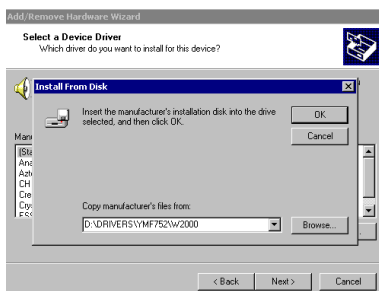
When asked if you want Windows to search for hardware, choose **“No, I want to select the hardware from a list”**. Then press **“Next”**.



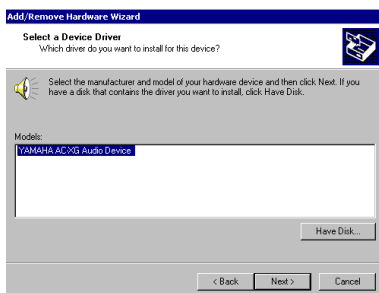
You will be asked the type of hardware you want to install. Select “Sound, video and game controllers” and then “Next” to go on.



When Selecting a Device Driver, choose “(Standard system devices)” and “Audio Codecs” and then “Next” to go on.



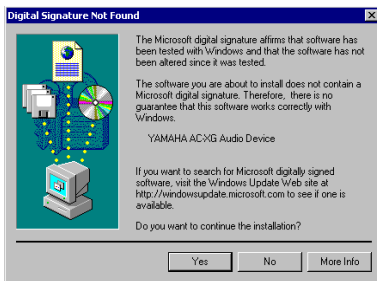
You will be asked to install the driver from disk. Insert the SL6 CD-Title into your CD-ROM drive. Press “Next” to go on.



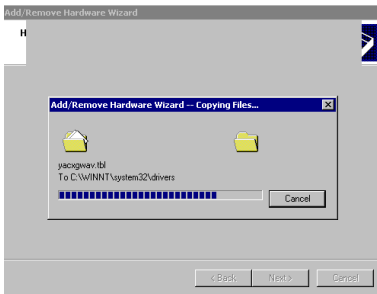
Under Select a Device Driver, the “Yamaha Ac-XG Audio Device” driver must be copied from the CD-ROM onto your computer. Press “Next” to go on.



Press **“Next”** to begin installation of the Yamaha AC-XG Audio Device.



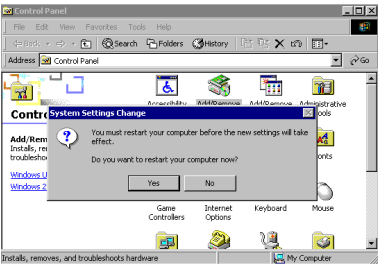
When asked if you wish to continue with installation, press **“Next”** to go on.



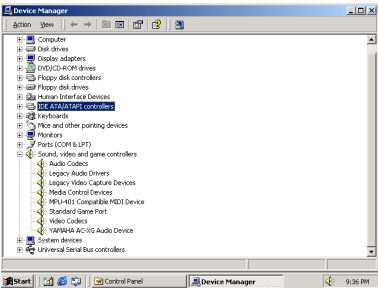
You will see that the installation is proceeding without problem.



You will be informed that the installation is complete. Press **“Finish”**



When asked if you want to restart your computer in order for the changes to take effect, press **“Yes”**.



Going back to the **“Device Manager”** and **“Sound, video and game controller”**, you will see that the Audio Driver has been installed successfully.